



## COVID-19 Data Report

\*Data current as of 01/12/2021 5:00pm

### Completed Tests

**\*\*Total Tests = 158,482**

**Positive Rate = 4.0%**

	Count**	% of total
Number not detected (negative)	150,269	94.8%
Number pending	840	0.5%

\*\* Count includes GRHC Patients, GRHC Employees, GRIC Dept and Enterprise Employees, and retests

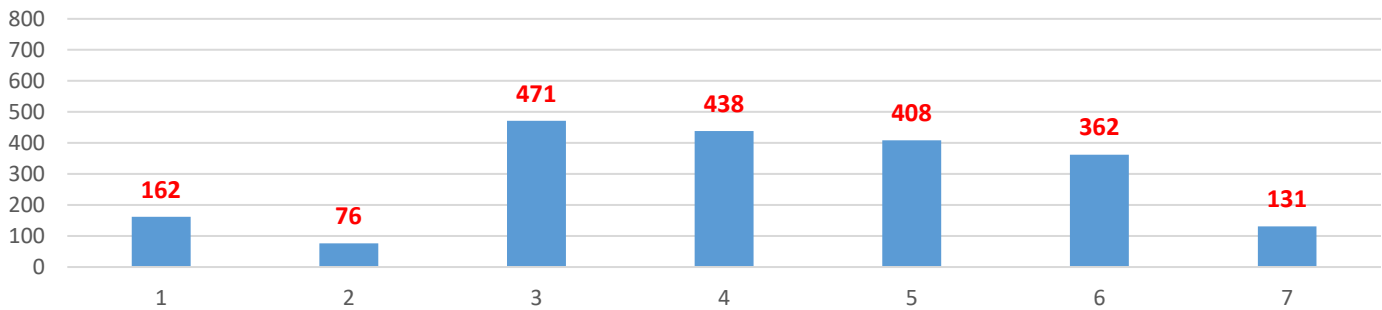
### Positive Case Information

\*Count does not include retests

	GRIC			GRIC Enrolled Member Deaths
	Enrolled Member	Non-Member	Total	
Residing within GRIC boundary	1,758	290	2,048	35
<u>Not</u> Residing within GRIC boundary	492	2,604	3,096	5
<b>*Total</b>	<b>2,250</b>	<b>2,894</b>	<b>5,144</b>	<b>40</b>

### Cumulative Positive Cases Residing within GRIC boundary by District

N = 2048

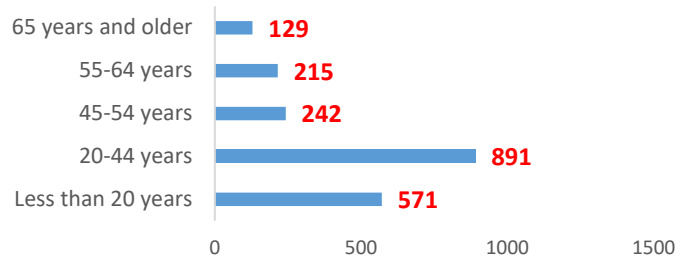


### Daily New GRIC Cases

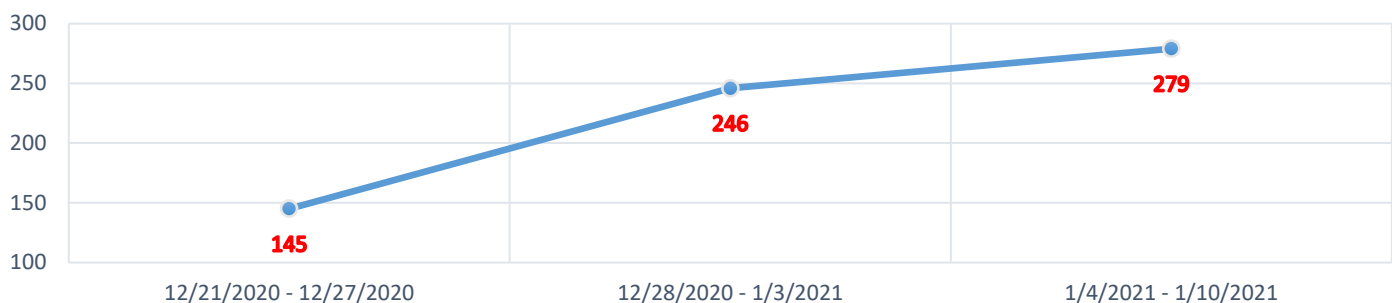
District 1	1
District 2	1
District 3	6
District 4	2
District 5	6
District 6	6
District 7	1

### Cumulative Positive Cases by Age Group

N = 2048



### GRIC Cases Reported in Last 3 Weeks



*\*\*\*Information provided in this report is intended to be a general summary of statistical information about the Gila River Indian Community COVID-19 findings as of the date of this writing and not intended for use for any other purposes. All information in this report is subject to change.\*\*\**