



COVID-19 Data Report

*Data current as of 10/07/2021 4:00 PM

Completed Tests

****Total Tests = 303,370**

7 Day Pos. Rate = 0.6%

	Count**	% of total
Number not detected (negative)	291,305	96.0%
Number pending	386	0.1%

** Count includes GRHC Patients, GRHC Employees, GRIC Dept and Enterprise Employees, and retests

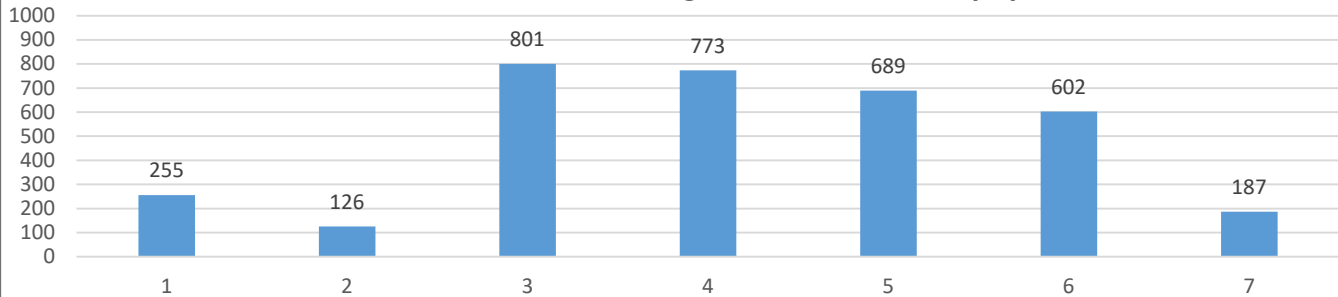
Positive Case Information

*Count does not include retests

	GRIC			GRIC Enrolled Member Deaths
	Enrolled Member	Non-Member	Total	
Residing within GRIC boundary	2,954	479	3,433	81
<u>Not</u> Residing within GRIC boundary	867	3,865	4,732	12
*Total	3,821	4,344	8,165	93

Cumulative Positive Cases Residing within GRIC boundary by District

N = 3,433

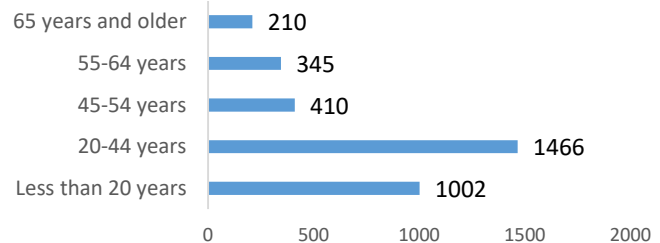


Daily New GRIC Cases

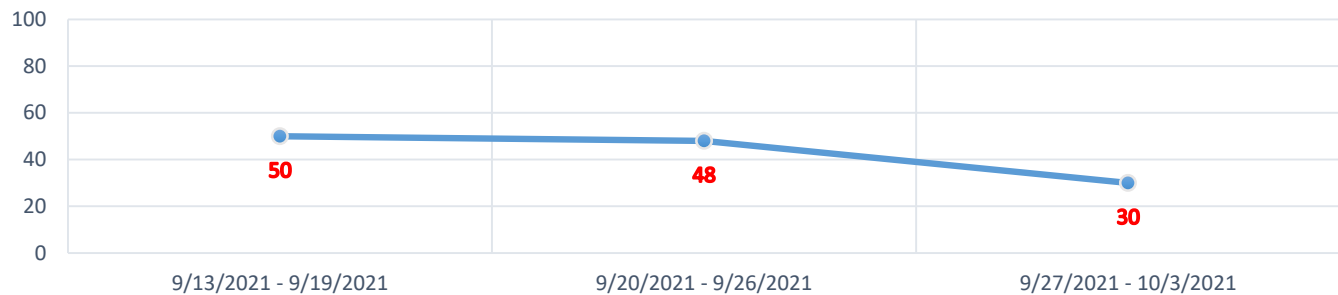
District 1	0
District 2	1
District 3	1
District 4	0
District 5	0
District 6	1
District 7	0

Cumulative Positive Cases by Age Group

N = 3,433



GRIC Cases Reported in Last 3 Weeks



Information provided in this report is intended to be a general summary of statistical information about the Gila River Indian Community COVID-19 findings as of the date of this writing and not intended for use for any other purposes. All information in this report is subject to change.